

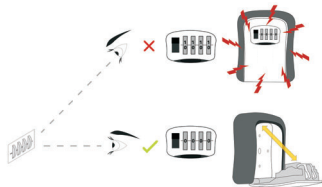
SCAN[®] KEY SAFE

SAFETY MADE SIMPLE

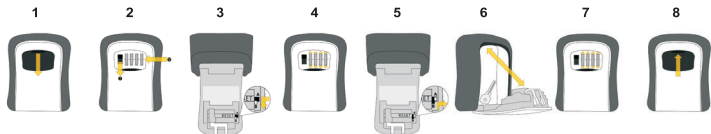
SCAKEYSAFE



Remove the safe from the wall to set a new combination.
Ensure dials are aligned centrally.



1. Open Shutter
2. Enter factory combination 0-0-0-0, Open safe door.
3. Slide lever from A to B.
4. Set new combination.
5. Slide lever from B to A.
6. Close door.
7. Clear numbers.
8. Close shutter.



FR
ES
DE

Declaration of Conformity is available at www.scan-safety.com

MANUFACTURER: **SCAN SAFETY PRODUCTS**
3 White Lodge Business Estate, Hall Road,
Norwich, Norfolk, NR4 6DG, UK.

EU REP: **TUCKS O'BRIEN LTD**
24 Magna Drive, Magna Bus. Park, Citywest
Rd, Dublin 24, D24 FNYO, Ireland.

E-mail: enquiries@scan-safety.com

DORMOLE LIMITED

SCAN is a trading name used by Dormole Limited which is a company registered in England and Wales with incorporation number 1156193 and who's registered office is at Long Reach, Gallion Boulevard, Crossways Business Park, Dartford, Kent, DA2 6QE.